

# Technical data sheet

## Clamp clip 2056 H-foot, 1-fold, metal pressure sleeve, A2

Item number: 1186169



Clamp clip with hammerhead foot, metal pressure sleeve with rounded edges to protect the cable. For vertical and horizontal mounting of 1 single cable on a C-profile rail. For a slot width 16–17 mm. With 1-start screw thread on pressure sleeve, universal hexagonal screw head WAF10, with slot and cross recess. Suitable for assembly indoors and outdoors. We recommend the use of a counter-sleeve.



A2	Stainless steel
2B	Bright, treated

Master data		
Item number	1186169	
Type	BS-H1-M-70 A2	
Description 1	Clamp clip 2056	
Manufacturer	OBO	
Dimension	64-70mm	
Material	Stainless steel	
Surface	Bright, treated	
Surface standard		
Smallest sales unit	15	
Unit of quantity	Piece	
Weight	16.1 kg	
Weight unit	kg/100 pc.	
CO Footprint (GWP) Cradle-to-Gate	0,8794 kg COe / 1 Piece	

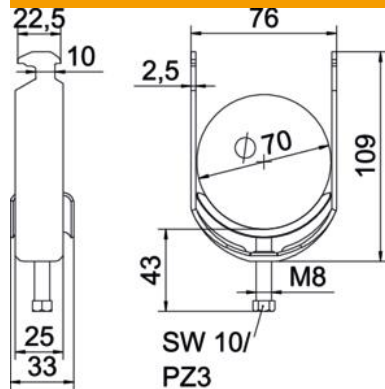
# Technical data sheet

## Clamp clip 2056 H-foot, 1-fold, metal pressure sleeve, A2

Item number: 1186169



### Dimensions



Length	25 mm
Width	76 mm
Height	109 mm
Plate thickness	2.5 mm
Dimension A	25 mm
Dimension B	76 mm
Dimension C	33 mm
Dimension G (mm)	M8
Dimension H	109 mm
Dimension L	43 mm
Dimension t	2.5 mm

### Technical data

Number of cables/pipes	1
Maintain electrical functions	yes
For pipe diameter, max.	70 mm
For pipe diameter, min.	64 mm
for rail with slot width (with interval), max.	17 mm
for rail with slot width (with interval), min.	16 mm
Thread	M8
Halogen-free	yes
Length of external dimensions	33 mm
Max. Tightening torque	5 Nm
With plastic trough	no
With metal trough	yes
Mounting type	Profile rail
Slot width	10 mm
Clamping range D, max.	70 mm
Clamping range D, min.	64 mm
Surface addition	Untreated
Material addition	Rustproof steel
With counter-trough	no
Material of trough	Rustproof steel
Material quality of trough	Stainless steel 304 (1.4301)