

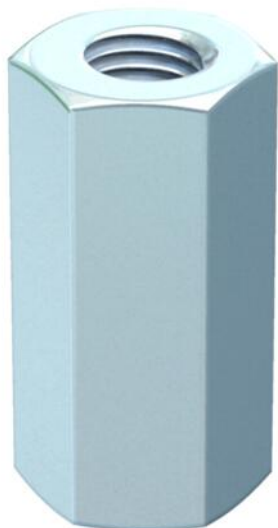
# Technical data sheet

## Connection sleeve

Item number: 6410111



Connection sleeve with continuous internal thread.



**St** Steel

**G** Electrogalvanized

### Master data

Item number	6410111
Type	CSTR M12 G
Description 1	Connection sleeve
Description 2	for threaded rod
Manufacturer	OBO
Dimension	M12x40mm
Material	Steel
Surface	Electrogalvanized
Surface standard	EN ISO 19598 / EN ISO 4042
Smallest sales unit	25
Unit of quantity	Piece
Weight	7 kg
Weight unit	kg/100 pc.
CO2 Footprint (GWP) Cradle-to-Gate	0,1687 kg CO2e / 1 Piece

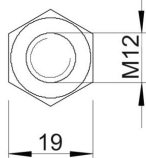
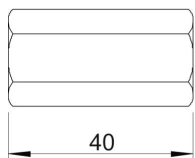
# Technical data sheet

## Connection sleeve

Item number: 6410111



### Dimensions



Length	40 mm
Dimension 1, metric	12
Dimension 2, metric	12
Dimension L	1.57 in
Dimension L	40 mm

### Technical data

Continuous thread	yes
Shape	Hexagonal
Thread	M12
WAF	19
Hexagonal	yes