

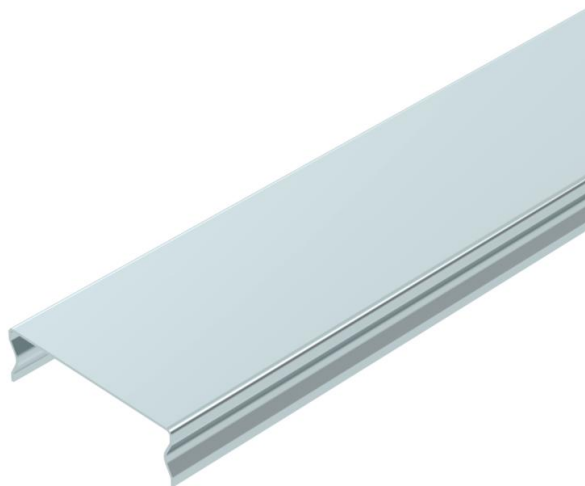
# Technical data sheet

## Cover for mesh cable tray, latchable FS



Item number: 6001840

Lockable cover for mesh cable trays of type GR and GRM. Protects cables from damage, contamination and moisture from above. Suitable for interior areas without specific requirements.



With transverse bead from 400 mm width.



**St** Steel

**FS** Strip galvanized

### Master data

Item number	6001840
Type	DGRR 50 FS
Description 1	Cover snapable
Description 2	for mesh cable tray
Available from	01.04.2019
Manufacturer	OBO
Dimension	50x3000
Material	Steel
Surface	Strip galvanized
Surface standard	DIN EN 10346
Smallest sales unit	3
Unit of quantity	Metre
Weight	46.333 kg
Weight unit	kg/100 m

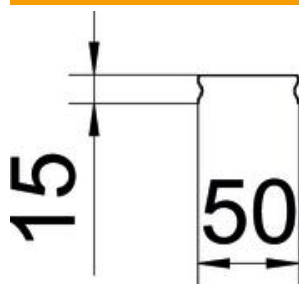
# Technical data sheet

Cover for mesh cable tray, latchable FS

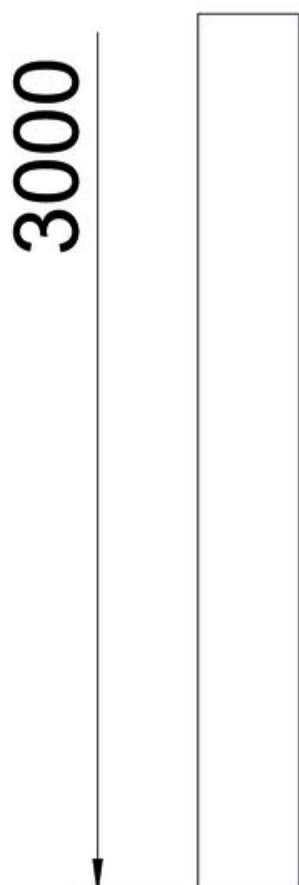
Item number: 6001840



## Dimensions



Length	3,000 mm
Width	50 mm
Width	1.97 in
Height	15 mm
Height	0.59 in
Plate thickness	0.75 mm
Dimension B	50 mm



# Technical data sheet

Cover for mesh cable tray, latchable FS

Item number: 6001840



## Technical data

Fastening type	Locking
Maintain electrical functions	no
Suitable for mesh cable tray	yes
Suitable for cable ladder	no
Suitable for cable tray	no
Rustproof steel, pickled	no