

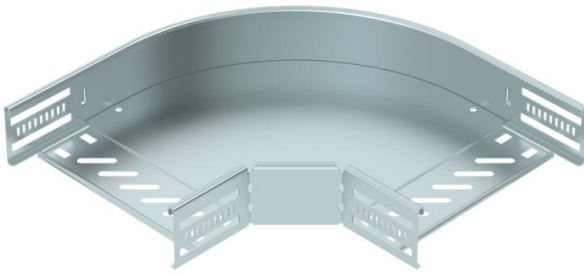
# Technical data sheet

## 90° bend 60 FS

Item number: 6036564



90° bend for the creation of a horizontal branch, fitting for lock and screw-on cable trays of side height 60 mm. Screwless mounting with double clamps or screw connection with FRS truss-head screws and M6 combination nuts. Can be used in indoor areas. Fastening material must be ordered separately.



St

Steel

FS

Strip galvanized

### Master data

|                                   |                            |
|-----------------------------------|----------------------------|
| Item number                       | 6036564                    |
| Type                              | RB 90 620 FS               |
| Description 1                     | 90° bend                   |
| Description 2                     | for cable tray, horizontal |
| Manufacturer                      | OBO                        |
| Dimension                         | 60x200                     |
| Colour                            | zinc                       |
| Material                          | Steel                      |
| Surface                           | Strip galvanized           |
| Surface standard                  | DIN EN 10346               |
| Smallest sales unit               | 1                          |
| Unit of quantity                  | Piece                      |
| Weight                            | 98.8 kg                    |
| Weight unit                       | kg/100 pc.                 |
| CO Footprint (GWP) Cradle-to-Gate | 2,9054 kg COe / 1 Piece    |

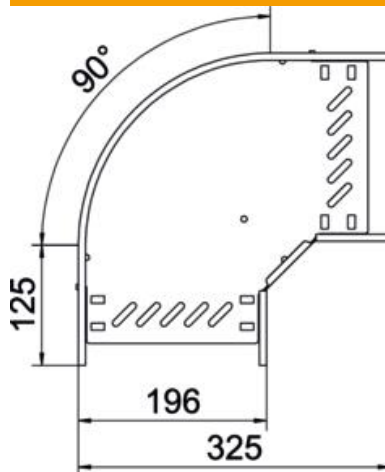
# Technical data sheet

90° bend 60 FS

Item number: 6036564



## Dimensions



|                 |        |
|-----------------|--------|
| Width           | 200 mm |
| Height          | 60 mm  |
| Plate thickness | 0.8 mm |
| Dimension B     | 200 mm |
| Dimension R     | 50 mm  |

## Technical data

|                                         |                      |
|-----------------------------------------|----------------------|
| Bend (angle)                            | 90°                  |
| Connector version                       | Integrated connector |
| Type                                    | Bend, rigid          |
| Maintain electrical functions           | yes                  |
| Material thickness, floor plate         | 0.8 mm               |
| With cover                              | no                   |
| Mounting perforation in base            | yes                  |
| NATO hole pattern                       | no                   |
| Change of direction                     | Horizontal           |
| Rustproof steel, pickled                | no                   |
| Side perforation                        | yes                  |
| Permitted temperature range, max.       | 120 °C               |
| Permitted temperature range, min.       | -20 °C               |
| Wide-span version                       | no                   |
| Type of connector, cable support system | screwed/clamped      |
| Recommended quantity of bolts           | 12 St.               |
| Rail thickness                          | 1.25 mm              |